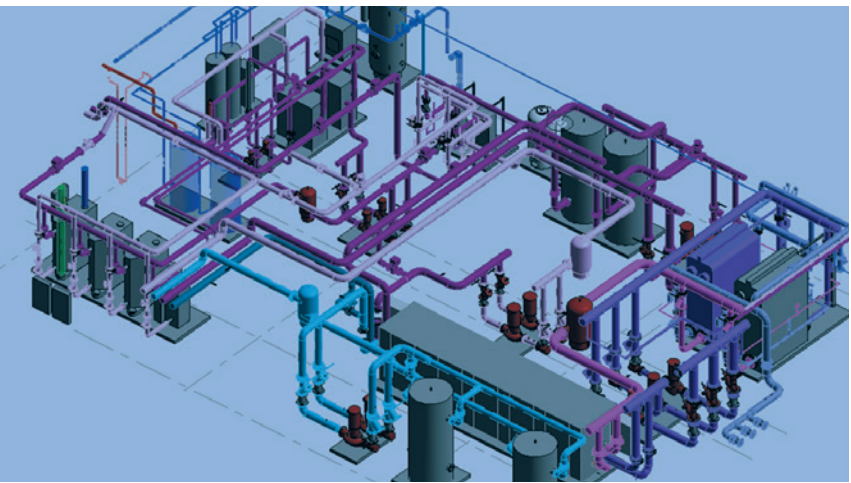




Our ongoing
commitment to excellence



Roberts Onsite
INTEGRATED MULTI-TRADE EXCELLENCE

Integrated Multi-trade Excellence

Roberts Onsite is one of Ontario's largest multi-trade contractors providing turn-key solutions for industrial, commercial, institutional and energy projects since 1938.

Our comprehensive electrical, mechanical, millwrighting, and rigging departments offer a truly integrated solution to the construction process.





Fully Equipped Facilities and Equipment

We have on-site fabrication space, a QPS® Certified Control Panel Shop as well as an extensive equipment and tool warehouse. Our fleet of fully stocked service vehicles and well-equipped warehouse guarantees that we have the tools, vehicles and equipment needed to perform tasks any time of day, any day of the week.

Putting Safety First

Our capable, informed team is committed to working safely, following our comprehensive safety policies and procedures at all times. We have been IHSA COR™ certified since 2017.

We've Got You Covered

Our team of over 250 of the industry's best tradespeople have the experience and skills to complete a wide variety of capital improvement and maintenance projects.



Mechanical

From large multi-phased construction projects to minor emergency maintenance repairs, our team of certified pipe fitters, plumbers, steamfitters, welders and fabricators have completed a range of mechanical projects. We have expertise with:

- Backflow Services
- Boilers
- Central Utility Systems
- Chillers & Cooling Towers
- Compressors
- Design Build
- Heat Recovery Systems
- Heating, Cooling & Ventilation
- Modular Piping
- Pipe Fabrication Shop —Yellow Label Certified
- Piping Systems: Food Grade, Paint, Petroleum; Water Treatment
- Plumbing
- Pneumatic Tubing & Controls
- Pre-fabricated Skid Assemblies
- Solar Thermal Systems
- Stainless Steel Piping

Millwrighting & Rigging

When it comes to millwrighting and rigging, no job is too big. We have the equipment and the skilled workforce necessary for all types of industrial machinery and mechanical equipment installations, dismantles, moves and repairs. Trust our team for the following:

- Injection Molding Machines
- Machinery Moving & Installation
- Material Handling & Conveyance Systems
- Mechanical & Hydraulic Presses
- Plant & Equipment Relocation
- Plant Maintenance Labour Support
- Predictive Maintenance & Service
- Press Inspections
- Rigging & Transportation
- Robotics & Automation
- Safety Guarding & Perimeter Fencing
- Structural Steel Fabrication



Preventative Maintenance

Our predictive maintenance solutions can help you reduce operating costs, increase the lifespan of equipment, plan for large-scale equipment improvements and upgrades, and realize increased environmental sustainability. We provide multi-trade expertise to assist with:

- Backflow Services
- Building Services
- Chiller Maintenance & Support
- Combustion Maintenance & Support
- Coordination Studies
- Digital Pipe Location
- Drain Camera Inspection
- Energy Conservation & Efficiency Management
- LV & HV Circuit Breaker, Switchgear Cleaning & Testing
- IR Scans/ Thermography Inspections
- Oil Burner Services
- Drain Cleaning & High-pressure Flushing
- Power Usage Assessments/Data Logger
- Press Inspections
- Supplemental Maintenance Workforces
- Transformer Cleaning & Testing
- Water Heater & Boiler Maintenance and Service



24-hour Emergency Service

Multi-trade emergency service is a phone call away
1.800.265.8961



Electrical

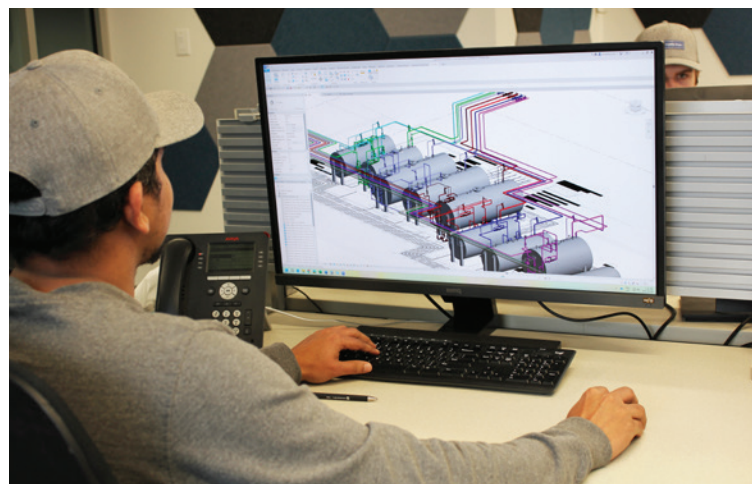
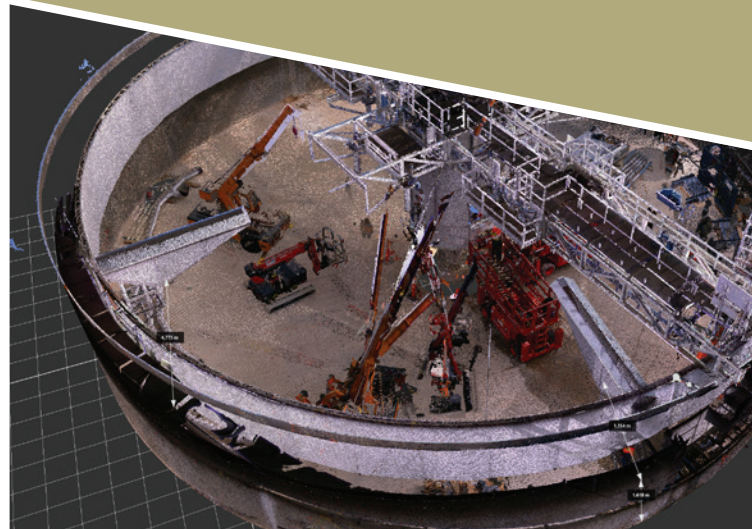
From the installation of complete lighting systems to comprehensive distribution and power installations, no matter how simple or complex the project, we have the knowledge to meet your electrical requirements. We have expertise with:

- Building Services
- Design Build
- Emergency Systems
- Fire Alarm
- Generators
- High Voltage
- Instrumentation
- Interior & Exterior Lighting
- Medium & Low Voltage Systems
- Power Distribution
- Solar Photovoltaic Systems
- Substations
- Wiring & Controls

Virtual Design & Construction (VDC)

Our team has the expertise and experience in Building Information Modeling (BIM) and Virtual Design and Construction (VDC) to visualize the construction site and optimize the construction schedule. We are well-equipped to work with your team and other stakeholders from concept to occupancy, improving workflow planning and scheduling while reducing waste and material overruns:

- Full 3D modelling of building systems
- Integration of equipment and devices
- 3D scanning of existing facilities
- Shared digital models for installers and clients
- Coordination between other building services
- Proficient in Revit, AutoCAD, Navisworks, and Trimble software
- Fabrication-ready drawings
- Continuous VDC support from design to closeout
- Estimation assistance



Communications

Our trained, certified technicians not only design and install, but also test and commission a wide range of end-to-end communications systems. From fiber optic cable to voice and data structured cable and Sumitomo air blown fiber systems we've got you covered. We have the know-how to provide:

- Backbone Cabling—Fiber/ Copper
- Fiber Optic Cabling — Single mode/ Multimode/ OSP (Outside Plant)
- Grounding
- Racks & Cabinets
- Sumitomo Air Blown Fiber Systems
- Voice & Data Structured Cabling—CAT5e, CAT6, CAT6A
- Wireless Access Point Cabling



Automation Controls & Engineering

You give us your problem—we will find the solution. Our highly skilled programming and design team provides customized, solutions-based services including:

- Arc Flash Analysis & Mitigation Studies
- Pre-Start Health & Safety Reviews (PSHSR)
- Machine Safety & Custom Guarding
- Electrical & Mechanical Design
- Turn-key Automation Solutions
- Robotic Assembly & Machine Vision
- Autonomous Guided Vehicles (AGVs)
- PLC, HMI, & Motion Control Programming
- Process Control & Batching Systems
- In-House QPS Certified Control Panel Shop
- Instrumentation & Calibration Services
- IR Scans / Thermography Inspections
- Vibration Analysis
- Factory Acceptance Testing (FAT)
- System Retrofits & Legacy Upgrades
- Legacy Intelligence – Operational Visibility for Existing Equipment



Contact us today for
more information

519.578.2230

www.robertsonsite.ca

sales@robertsonsite.ca

 [company/roberts-onsite/](https://www.linkedin.com/company/roberts-onsite/)

Head Office:

209 Manitou Drive, Kitchener
ON, Canada
N2C 1L4

24-hour Emergency Service

Multi-trade emergency service is a phone call away

1.800.265.8961

 **Roberts Onsite**
INTEGRATED MULTI-TRADE EXCELLENCE